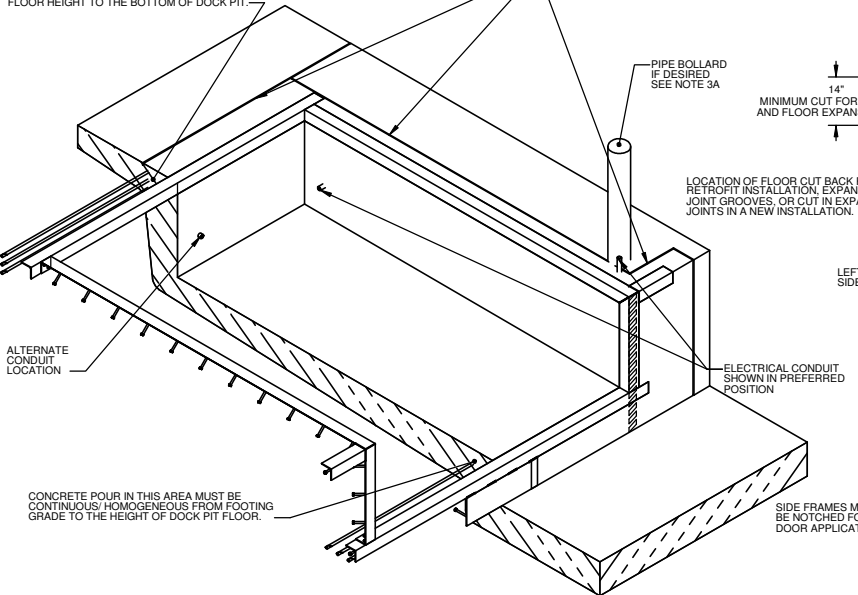


CONCRETE POUR IN THIS AREA MUST BE CONTINUOUS / HOMOGENEOUS FROM DOCK FLOOR HEIGHT TO THE BOTTOM OF DOCK PIT.

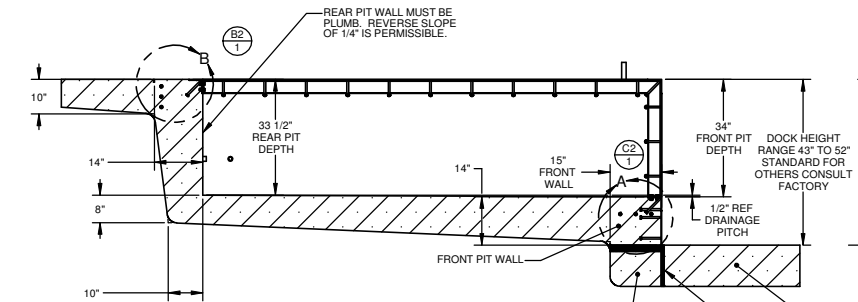
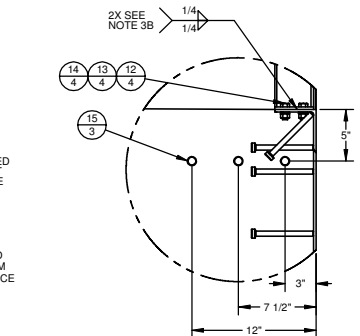
LOCATION OF FLOOR CUT BACK FOR RETROFIT INSTALLATION, OR FOR EXPANSION JOINT GROOVES, OR FOR CUT IN EXPANSION JOINTS IN NEW INSTALLATION.



REVISION HISTORY				
REV	DATE	DESCRIPTION	ECN	APPROVED BY
A	06/22/2004	RELEASE FOR PRODUCTION	20040210	T. LATHAM
B	03/03/2008	PICTORIAL UPDATE	20080042	J. ANDERSEN
C	03/10/2010	UP'D'D DESCRIPTION TO INCLUDE RHJ50	20090214	M. SVELM

TABLE "A"			
HJ LEVELER LENGTH	DIM A PIT LENGTH	HJ B PIT SQUARING DIMENSION REFERENCE	PIT STEEL KIT # OR DRAWING REQUEST #
HJ 8L	85"	134 5/16"	0116777
HJ 10L	109"	150 5/8"	0116778
HJ12L	133"	168 13/16"	0116779

REBAR LAYOUT AND PIT STEEL ASSEMBLY



IMPORTANT BUILDING NOTES TO CONSIDER WHEN APPLYING THIS LEVELER:

- 1A) THE PREFERRED DOCK DOOR OPENING WIDTH IS 10' (120"). NOTE: IF A 9' (108") DOOR OPENING IS USED THE TOP LEG OF THE ANGLE ON THE PIT STEEL SIDE FRAME MAY HAVE TO BE CUT AT DOOR FRAME.
- 2A) MULTIPLE LEVELERS IN A ROW WE RECOMMEND A MINIMUM DOOR CENTERLINE OF 14' (168") FOR THIS LEVELER.
- 3A) IF PIPE BOLLARDS ARE USED TO PROTECT THE DOCK DOOR AND BUILDING WALL THEY MUST BE LOCATED AS FOLLOWS: SIDE WALL OF PIT TO CLOSEST EDGE OF PIPE: 8" DOCK FACE OF PIT TO CLOSEST EDGE OF PIPE: 12" PIPE SHOULD EXTEND 6 BELOW DOCK PIT FLOOR (EXAMPLE 40" ABOVE FLOOR + 34" PIT DEPTH + 6" = 80" TOTAL PIPE LENGTH) LOCAL ARCHITECT TO VERIFY MINIMUM DIMENSIONS FOR YOUR SPECIFIC APPLICATION.

IMPORTANT NOTES PIT CONSTRUCTION:

- 1B) PIT CONSTRUCTION MUST FOLLOW INSTRUCTIONS AND DETAILS OUTLINED IN THIS DOCUMENT. RITE-HITE CORP. WILL NOT BE RESPONSIBLE FOR EQUIPMENT FAILURE DUE TO IMPROPER PIT CONSTRUCTION.
- 2B) PIT STEEL AVAILABLE FROM RITE-HITE AT ADDITIONAL COST SEE TABLE "A". PIT STEEL CAN BE FURNISHED BY GENERAL CONTRACTOR BUT MUST COMPLY TO RITE-HITE DRAWINGS SPECIFICATIONS. TO OBTAIN DETAILED PIT STEEL DRAWINGS FROM RITE-HITE REQUEST PART NUMBER DRAWINGS ONLY FROM TABLE "A".
- 3B) BOLT TOGETHER BOTH SIDE PIT STEEL FRAMES TO FRONT PIT STEEL THEN REAR PIT STEEL. WELDING MAY BE USED IN LIEU OF BOLTING. SEE ADDITIONAL INFORMATION FOR ASSEMBLY/WELDING IN DETAILS "A" & "B".
- 4B) CONCRETE MUST BE 2,500 PSI MINIMUM.

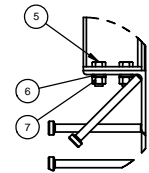
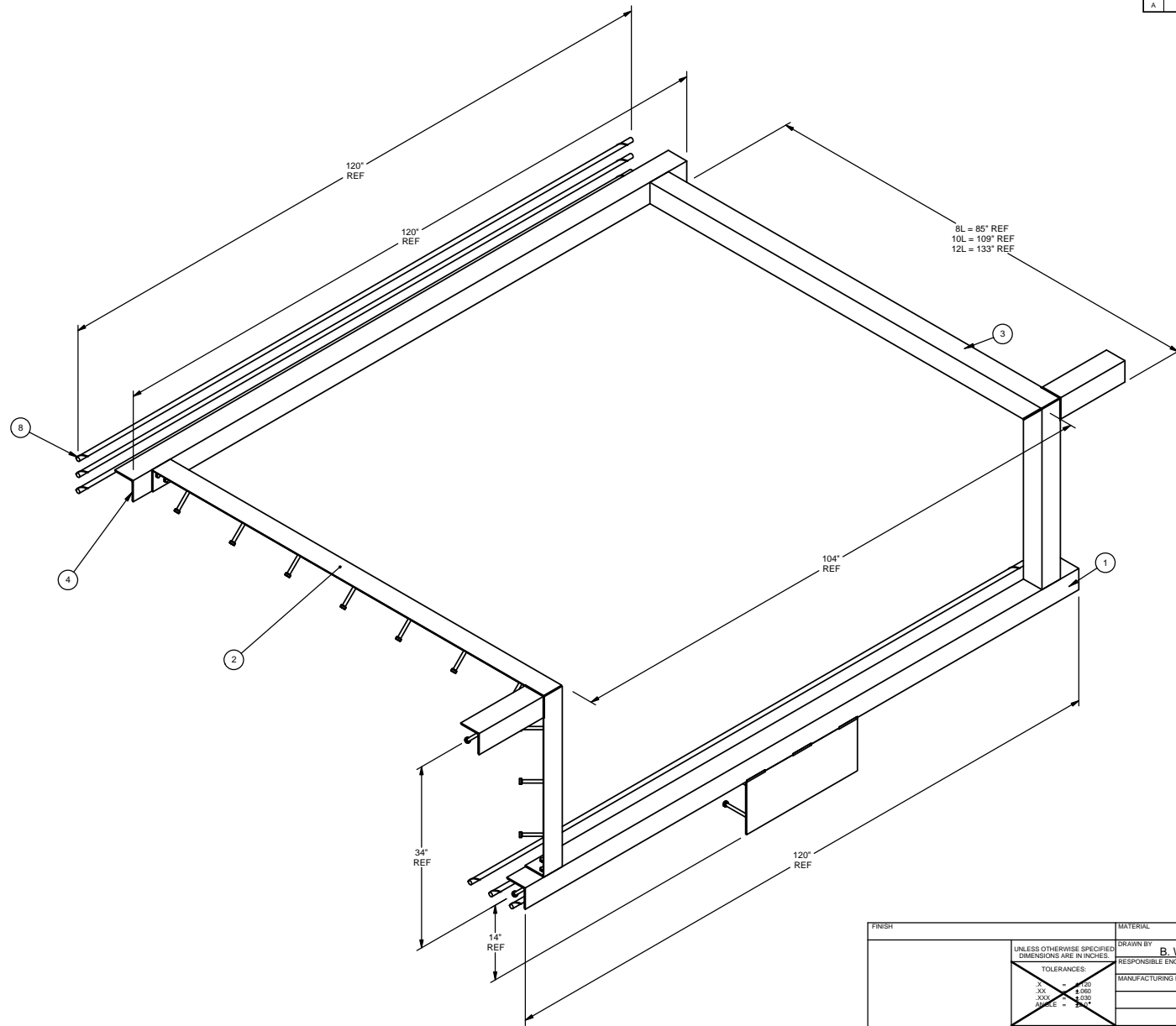
- 5B) CONCRETE PIT MUST BE CONTINUOUS / HOMOGENEOUS POUR.
- 6B) CONCRETE MUST BE WELL VIBRATED AROUND ALL PIT STEEL.
- 7B) CONDUIT STUB THREADS MUST BE COMPLETELY FREE OF DEBRIS, UPON COMPLETION OF PIT CONSTRUCTION.
- 8B) TOLERANCES ±1/8" (UNLESS OTHERWISE SPECIFIED)

REF. ITEMS INCLUDED WITH KIT IF PURCHASED

ITEM	QTY	PART NO.	DESCRIPTION
12	8	0111273	BOLT .500-13X1.250 CAP HEX G5 ZP
13	8	0051807	WSHR SPLIT LOCK .50 DIA
14	8	0051553	NUT .500-13 HEX ZP
15	6	0116747	REBAR #6 GR60 120L

FRESH UNLESS OTHERWISE SPECIFIED DIMENSIONS ARE IN INCHES. TOLERANCES: .XX ± .000 .XXX ± .005 .XXXX ± .010 .XXXXX ± .015 THIRD ANGLE PROJECTION	MATERIAL DRAWN BY: M. A. SWESSEL RESPONSIBLE ENGINEER: T. LATHAM		RITE-HITE® PRODUCTS CORPORATION TITLE: PIT DETAIL HJ/RHJ50 PIT(34DX104W)		
	MANUFACTURING ENGINEER:		REFERENCE:	SIZE: D	
	ALL SHEETS ARE THE SAME REVISION STATUS.		DO NOT SCALE DRAWING	DWG NO: 0116782	REV: C
	© 2010 RITE-HITE® PRODUCTS CORPORATION		SCALE: 1:18	WEIGHT:	SHEET 1 OF 1

REVISION HISTORY			
REV	DATE	DESCRIPTION	APPROVED BY
A	08/30/2004	RELEASE FOR PRODUCTION	T. LATHAM



TYPICAL ASSEMBLED JOINT

NOTES:

- 1) SHOWN IN ASSEMBLED CONDITION PARTS SHIP LOOSE ON PALLET.
- 2) HARDWARE SHIPPED IN BAG ATTACHED TO ITEM # 1 (0116783).
- 3) WELDING MAY BE USED IN LIEU OF BOLTING SEE PIT DETAIL DWG #0116782.

BOM IS FOR REFERENCE ONLY

ITEM	QTY	PART NO.	DESCRIPTION
1	1	0116783	PITSTL VLDMT DFFRT 14 X 120L
2	1		PITSTL VLDMT LEFT
3	1		PITSTL VLDMT RIGHT
4	1	0116776	ANG PITSTL 4 X 4 X .25 X 120L
5	8	0111273	BOLT .500-13X1.250 CAP HEX GS
6	8	0051807	W/SHR SPLIT LOCK .50 DIA
7	8	0051553	NUT .500-13 HEX ZP
8	8	0116747	REBAR #6 GR60 120L

FINISH UNLESS OTHERWISE SPECIFIED DIMENSIONS ARE IN INCHES. TOLERANCES: .X = .000 .XX = .005 .XXX = .010 .XXX = .010 .XXX = .010 .XXX = .010	MATERIAL DRAWN BY B. WIEBERDINK RESPONSIBLE ENGINEER T. LATHAM	RITE-HITE® PRODUCTS CORPORATION	
	MANUFACTURING ENGINEER REFERENCE ALL SHEETS ARE THE SAME REVISION STATUS DO NOT SCALE DRAWING	TITLE DWG ASSY PITSTL 104W 34P HJ	SIZE D
© 2004 RITE-HITE® PRODUCTS CORPORATION	THIRD ANGLE PROJECTION	SCALE 1:8	SHEET 1 OF 1

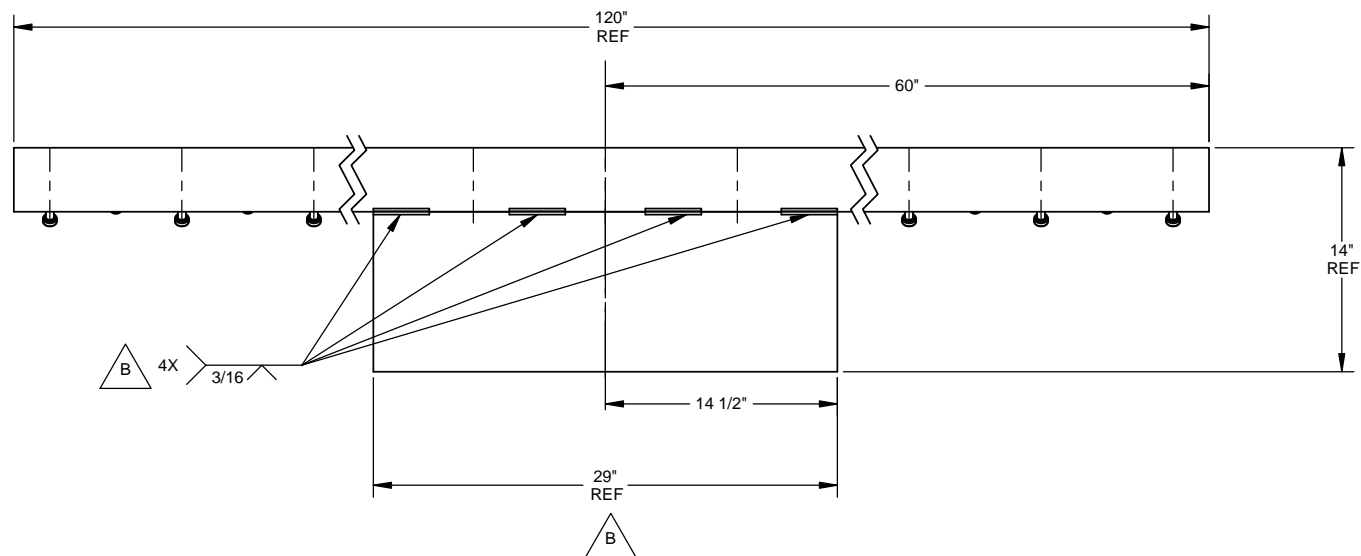
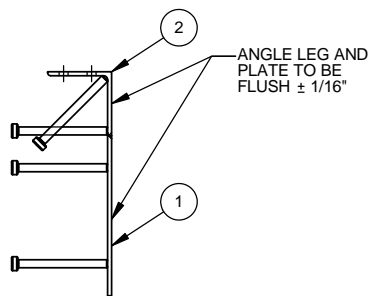
4

3

2

1

REVISION HISTORY				
REV	DATE	DESCRIPTION	ECN	APPROVED BY
A	08/27/2004	RELEASE FOR PRODUCTION	20040210	T. LATHAM
B	03/03/2008	WELD / CHAMFER QTY WAS 3	20080042	J.ANDERSEN
B	03/03/2008	PART 0116767 WAS 24L	20080042	J.ANDERSEN



NOTES:

- 1) ALL TOLERANCES $\pm 1/16"$
- 2) PAINT ONE COAT RITE-HITE GRAY OR CUSTOMER SPECIFIED COLOR.
- 3) REMAINING SHEETS OF THIS DRAWING ARE FOR FIELD USE ONLY.



ITEM	QTY.	PART NO.	DESCRIPTION
1	1	0116767	PL PITSTL .25 X 10 X 29L
2	1	0116768	ANG PITSTL 4 X 4 X .25 X 120L

FINISH	UNLESS OTHERWISE SPECIFIED DIMENSIONS ARE IN INCHES. TOLERANCES: .X = $\pm .120$.XX = $\pm .060$.XXX = $\pm .030$ ANGLE = $\pm 2.0^\circ$	MATERIAL	RITE-HITE® PRODUCTS CORPORATION TITLE PITSTL WLDMT DF/FRT 14 X 120L PIT(104W)
		DRAWN BY M. A. SWESSEL RESPONSIBLE ENGINEER T. LATHAM MANUFACTURING ENGINEER	
THIRD ANGLE PROJECTION		SIZE C	DWG NO 0116783
© 2008 RITE-HITE® PRODUCTS CORPORATION		SCALE 1:6 WEIGHT 98.51 LBS.	SHEET 1 OF 3 REV B

4

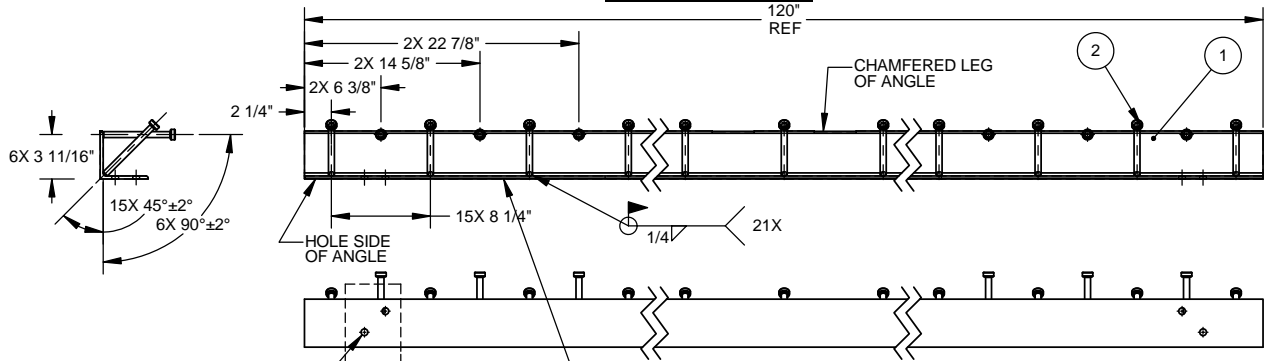
3

2

1

REVISION HISTORY				
REV	DATE	DESCRIPTION	ECN	APPROVED BY
A	08/27/2004	RELEASE FOR PRODUCTION	20040210	T. LATHAM
B	03/03/2008	WELD / CHAMFER QTY WAS 3	20080042	J.ANDERSEN
B	03/03/2008	PART 0116767 WAS 24L	20080042	J.ANDERSEN

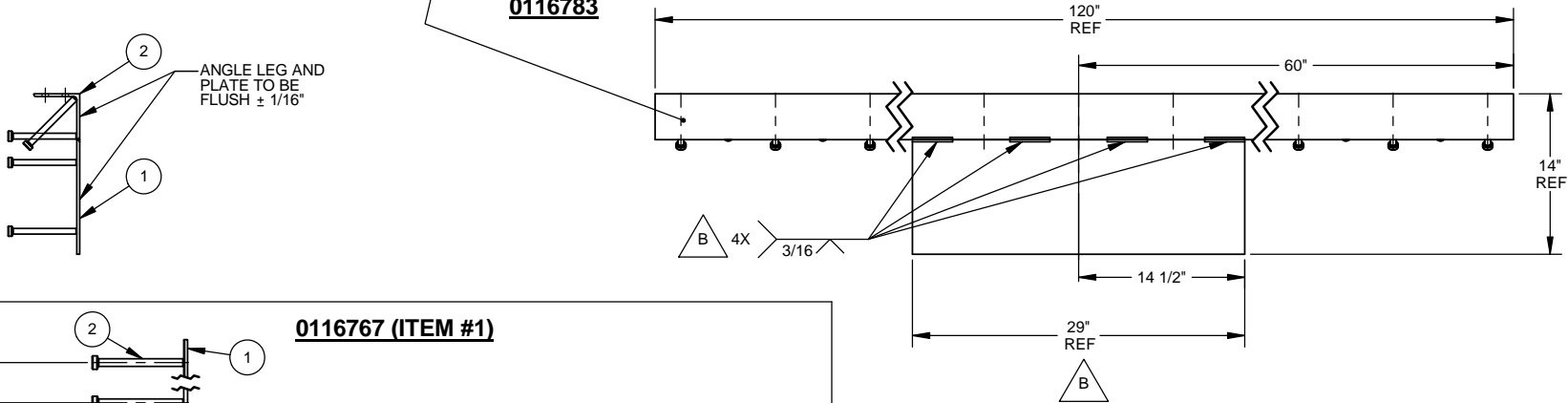
0116768 (ITEM #2)



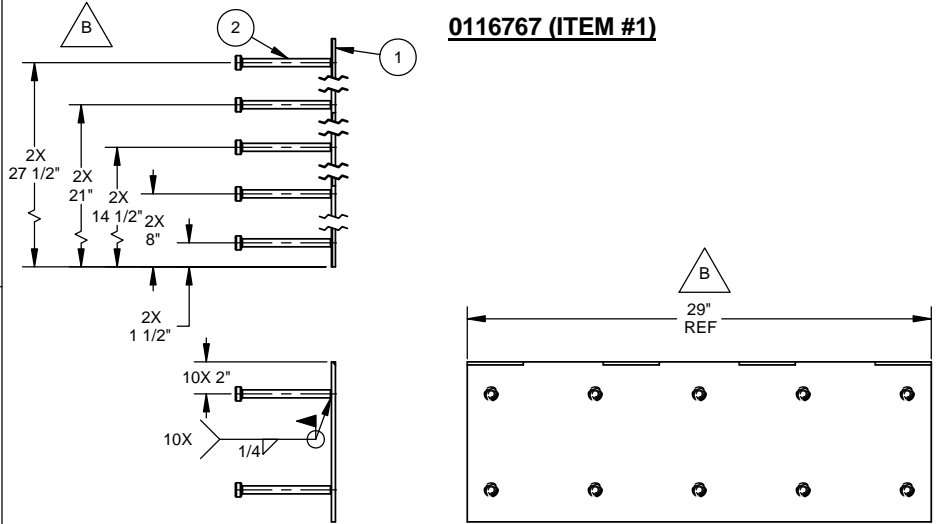
FOR DETAILS SEE SHEET 3

ITEM	QTY.	PART NO.	DESCRIPTION
1	1	0116759	ANG 4 X 4 X .25 X 120L 4HOLE
2	21	0053122	STUD .5 X 6L NELSON

0116783



0116767 (ITEM #1)



FOR DETAILS SEE SHEET 3

ITEM	QTY.	PART NO.	DESCRIPTION
1	1	0116760	PL .25 X 10 X 29 4CHAM
2	10	0053122	STUD .5 X 6L NELSON

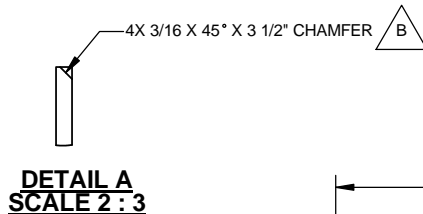
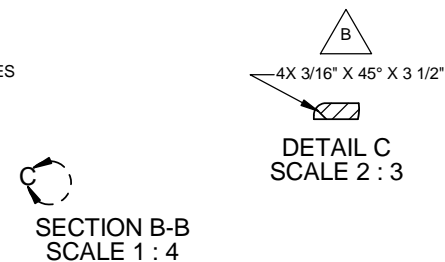
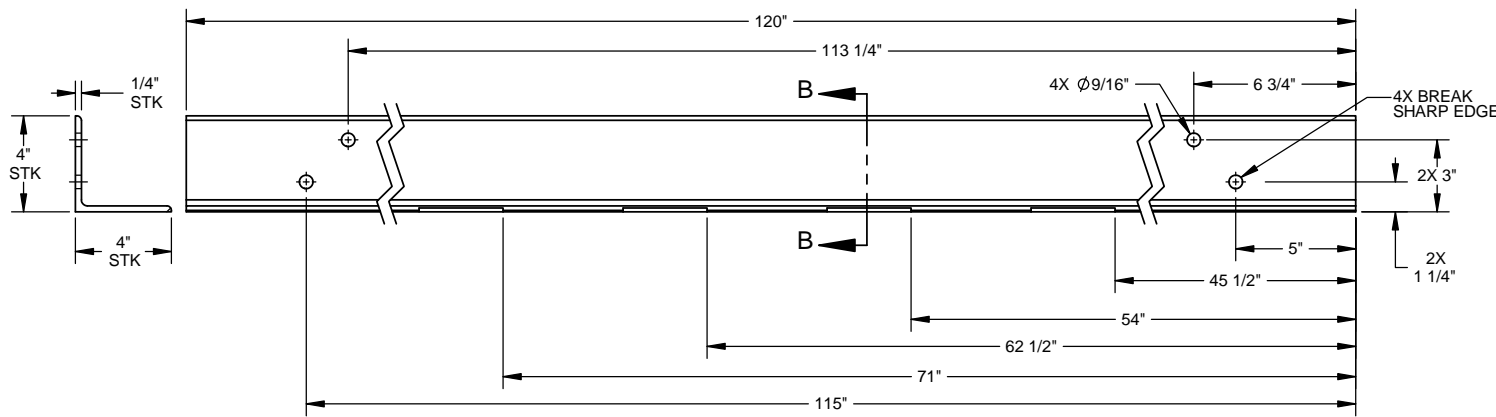
- NOTES:**
- 1) ALL TOLERANCES ±1/16"
 - 2) REMOVE WELD SPATTER AT ZONE.
 - 3) PAINT ONE COAT RITE-HITE GRAY OR CUSTOMER SPECIFIED COLOR
 - 4) DETAILS OF PARTS 0116759 AND 0116760 SEE SHEET 3.
 - 5) SHEET 1 OF THIS DRAWING IS FOR RITE-HITE PRODUCTION USE ONLY.
 - 6) BENT REBAR IS NOT AN ACCEPTABLE SUBSTITUTE FOR NELSON STUD.

ITEM	QTY.	PART NO.	DESCRIPTION
1	1	0116767	PL PITSTL .25 X 10 X 29L
2	1	0116768	ANG PITSTL 4 X 4 X .25 X 120L

FINISH	UNLESS OTHERWISE SPECIFIED DIMENSIONS ARE IN INCHES.	DRAWN BY M. A. SWESSEL	RITE-HITE® PRODUCTS CORPORATION
	TOLERANCES: .X = +.120 .XX = +.060 .XXX = +.030 ANGLE = ±2.0	RESPONSIBLE ENGINEER T. LATHAM MANUFACTURING ENGINEER	
THIRD ANGLE PROJECTION		REFERENCE	ALL SHEETS ARE THE SAME REVISION STATUS DO NOT SCALE DRAWING
© 2008 RITE-HITE® PRODUCTS CORPORATION		SIZE C	DWG NO 0116783
		SCALE 1:8	WEIGHT 98.51 LBS. SHEET 2 OF 3

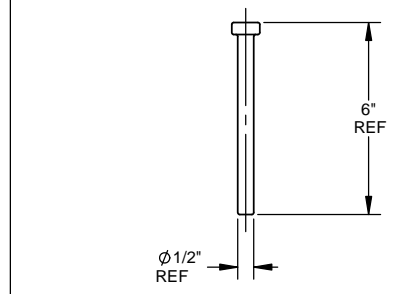
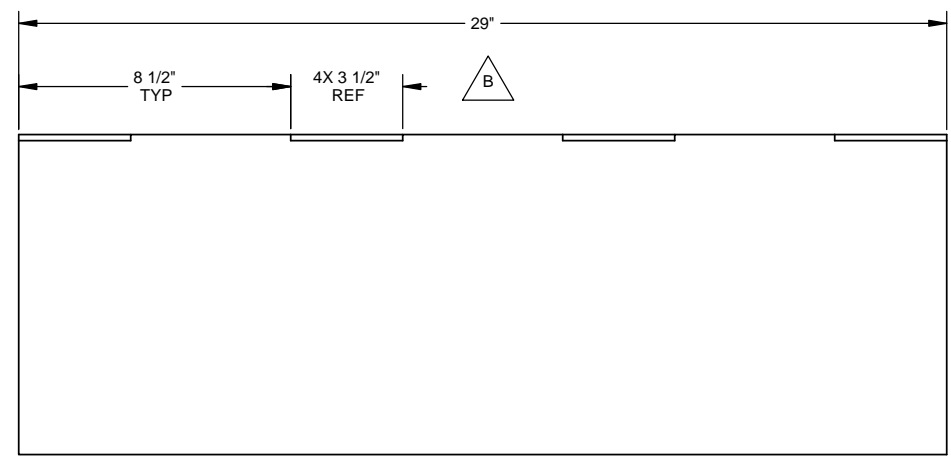
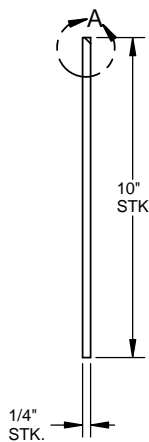
REVISION HISTORY				
REV	DATE	DESCRIPTION	ECN	APPROVED BY
A	08/27/2004	RELEASE FOR PRODUCTION	20040210	T. LATHAM
B	03/03/2008	WELD / CHAMFER QTY WAS 3	20080042	J. ANDERSEN
B	03/03/2008	PART 0116767 WAS 24L	20080042	J. ANDERSEN

0116759



0116760

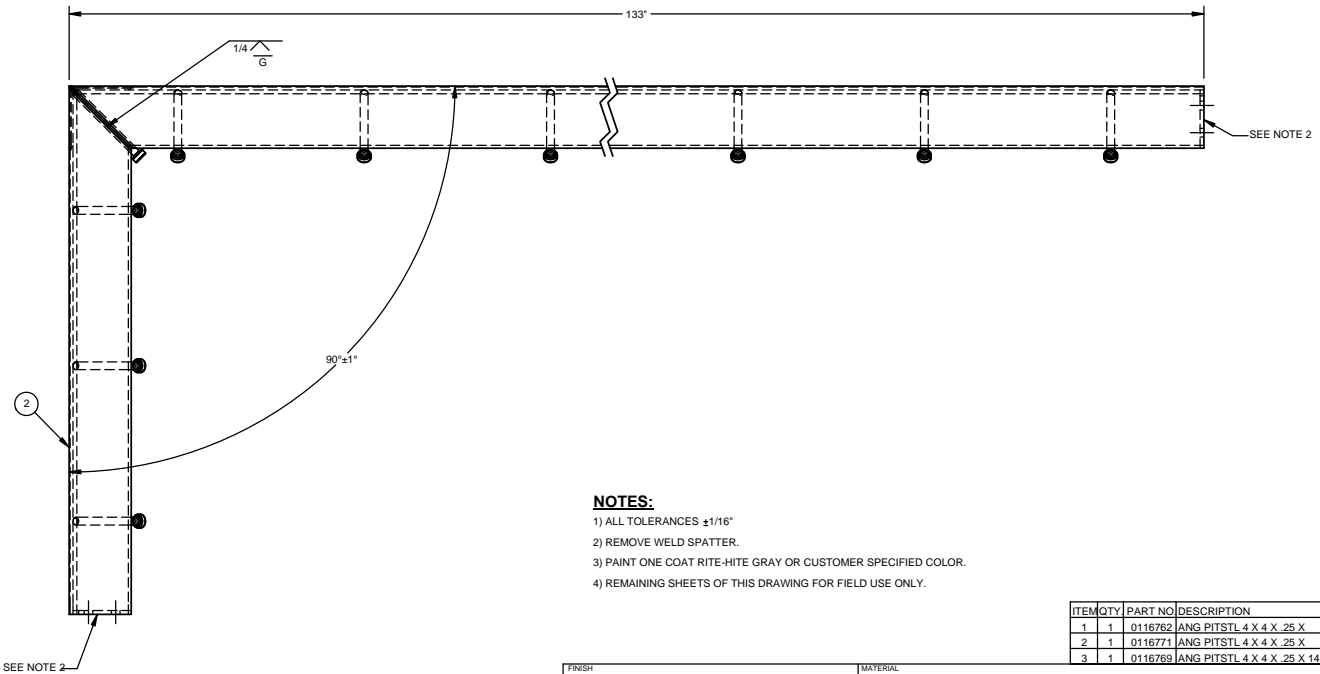
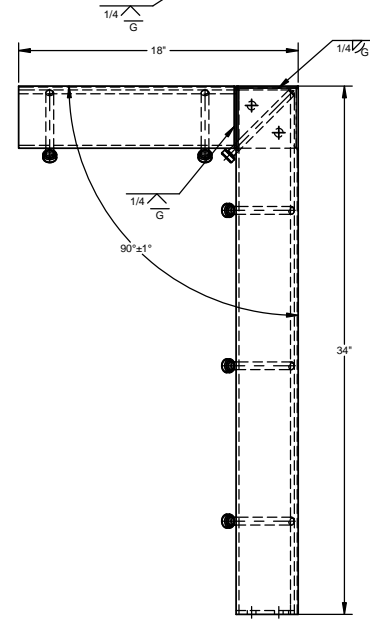
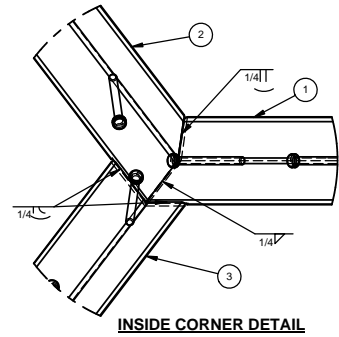
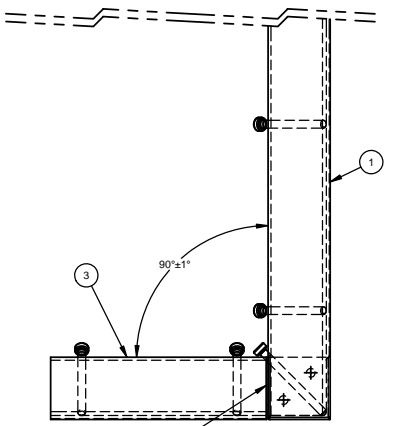
**DETAIL A
SCALE 2:3**



- NOTES:**
- 1) ALL TOLERANCES ±1/16"
 - 2) MAT'L: A-36 OR EQUIVALENT

FINISH	UNLESS OTHERWISE SPECIFIED DIMENSIONS ARE IN INCHES.	MATERIAL	RITE-HITE® PRODUCTS CORPORATION	
	TOLERANCES: .X = +.120 .XX = +.060 .XXX = +.030 ANGLE = ±2.0	DRAWN BY M. A. SWESSEL RESPONSIBLE ENGINEER T. LATHAM MANUFACTURING ENGINEER	TITLE PITSTL WLDMT DF/FRT 14 X 120L PIT(104W)	REV B
THIRD ANGLE PROJECTION	REFERENCE ALL SHEETS ARE THE SAME REVISION STATUS	SIZE C	DWG NO 0116783	SCALE 1:3
© 2008 RITE-HITE® PRODUCTS CORPORATION	DO NOT SCALE DRAWING	SCALE 1:3	WEIGHT	SHEET 3 OF 3

REVISION HISTORY			
REV	DATE	DESCRIPTION	APPROVED BY
A	08/27/2004	RELEASE FOR PRODUCTION	T. LATHAM



- NOTES:**
- 1) ALL TOLERANCES $\pm 1/16"$
 - 2) REMOVE WELD SPATTER.
 - 3) PAINT ONE COAT RITE-HITE GRAY OR CUSTOMER SPECIFIED COLOR.
 - 4) REMAINING SHEETS OF THIS DRAWING FOR FIELD USE ONLY.

ITEM	QTY	PART NO	DESCRIPTION
1	1	0116762	ANG PITSTL 4 X 4 X .25 X
2	1	0116771	ANG PITSTL 4 X 4 X .25 X
3	1	0116769	ANG PITSTL 4 X 4 X .25 X 14L

FINISH	MATERIAL	DRAWN BY M. A. SWESSEL	
	UNLESS OTHERWISE SPECIFIED DIMENSIONS ARE IN INCHES.	RESPONSIBLE ENGINEER T. LATHAM	
TOLERANCES:	.XX	± .005	TITLE RITE-HITE © PRODUCTS CORPORATION
	.XXX	± .010	
THIRD ANGLE PROJECTION	REFERENCE	SIZE D	DWG NO 0116788
© 2004 RITE-HITE PRODUCTS CORPORATION	DO NOT SCALE DRAWING	SCALE 1:4	WEIGHT 107 LBS.
			SHEET 1 OF 3
			REV A

D

D

C

C

B

B

A

A

8

7

6

5

4

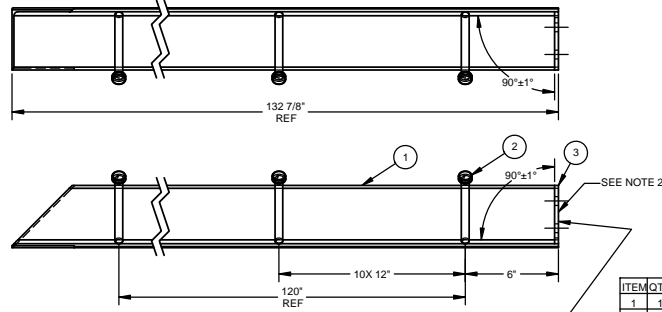
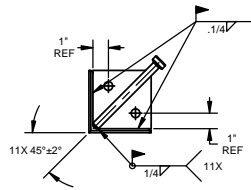
3

2

1

REVISION HISTORY			
REV	DATE	DESCRIPTION	APPROVED BY
A	08/27/2004	RELEASE FOR PRODUCTION	T. LATHAM

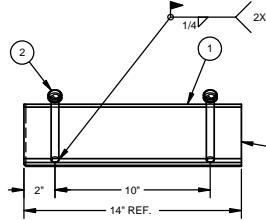
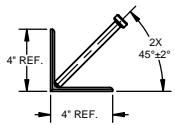
0116762 (ITEM #1)



FOR DETAILS SEE SHEET 3

ITEM	QTY	PART NO	DESCRIPTION
1	1	0116750	
2	11	0053122	STUD .5 X 6L NELSON
3	1	0116748	BAR .25 X 3.75 X 3.75L 2HOLE CHAM

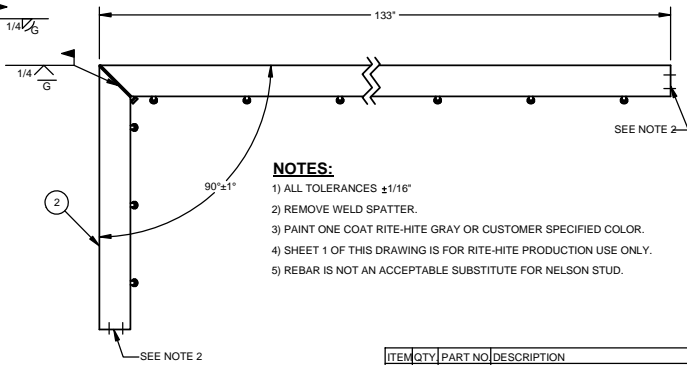
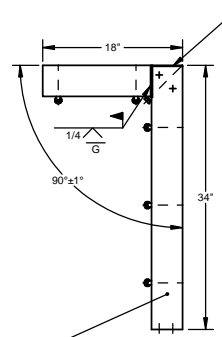
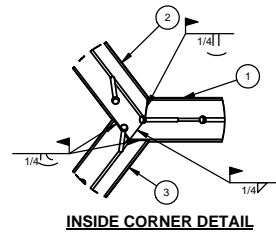
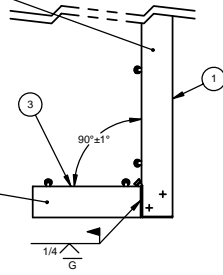
0116769 (ITEM #3)



FOR DETAILS SEE SHEET 3

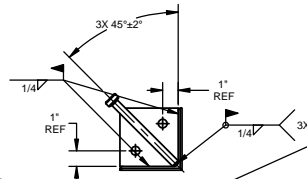
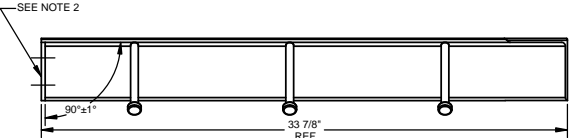
ITEM	QTY	PART NO	DESCRIPTION
1	1	0116755	ANG 4 X 4 X .25 X 14L 2CHAM
2	2	0053122	STUD .5 X 6L NELSON

0116788



- NOTES:**
- 1) ALL TOLERANCES ±1/16"
 - 2) REMOVE WELD SPATTER.
 - 3) PAINT ONE COAT RITE-HITE GRAY OR CUSTOMER SPECIFIED COLOR.
 - 4) SHEET 1 OF THIS DRAWING IS FOR RITE-HITE PRODUCTION USE ONLY.
 - 5) REBAR IS NOT AN ACCEPTABLE SUBSTITUTE FOR NELSON STUD.

0116771 (ITEM #2)



FOR DETAILS SEE SHEET 3

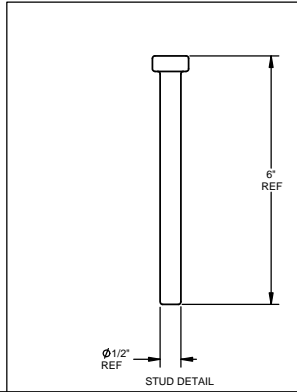
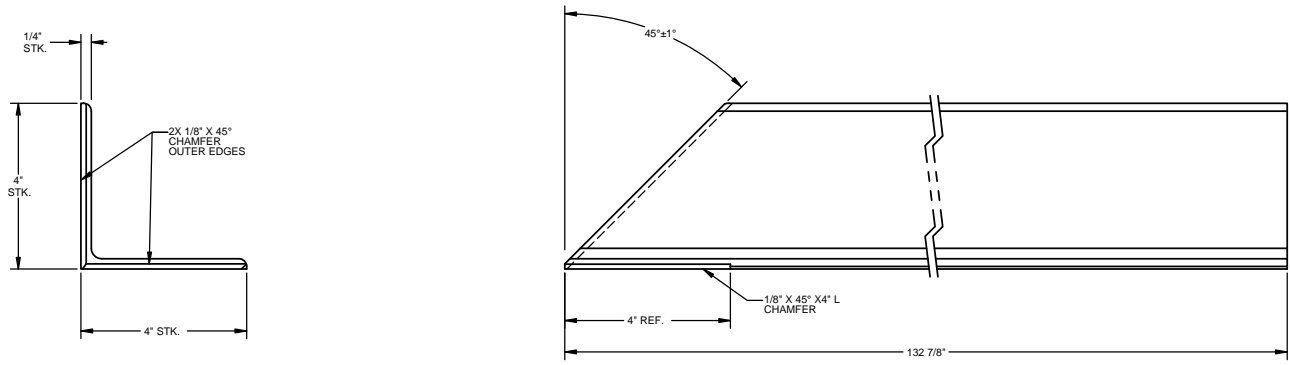
ITEM	QTY	PART NO	DESCRIPTION
1	1	0116757	
2	3	0053122	STUD .5 X 6L NELSON
3	1	0116748	BAR .25 X 3.75 X 3.75L 2HOLE CHAM

ITEM	QTY	PART NO	DESCRIPTION
1	1	0116762	ANG PITSTL 4 X 4 X .25 X 132.88L LEFT
2	1	0116771	ANG PITSTL 4 X 4 X .25 X 33.88L LEFT
3	1	0116769	ANG PITSTL 4 X 4 X .25 X 14L

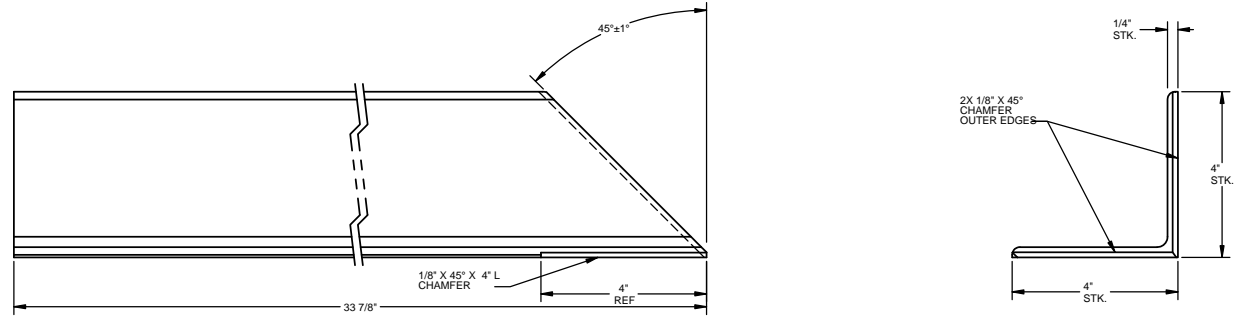
FINISH		MATERIAL	
DRAWN BY M. A. SWESSEL		RESPONSIBLE ENGINEER T. LATHAM	
TOLERANCES: X .XX = ±.02 .XX .XXX = ±.005 XXX = ±.03 HOLE = ±.04		TITLE RITE-HITE® PRODUCTS CORPORATION	
THIRD ANGLE PROJECTION		REFERENCE	
© 2004 RITE-HITE® PRODUCTS CORPORATION		ALL SHEETS ARE THE SAME REVISION STATUS	
DO NOT SCALE DRAWING		SCALE 1:8	WEIGHT 107 LBS.
SIZE D		DWG NO 0116788	REV A
		SHEET 2 OF 3	

REVISION HISTORY				
REV	DATE	DESCRIPTION	ECN	APPROVED BY
A	08/27/2004	RELEASE FOR PRODUCTION	20040210	T. LATHAM

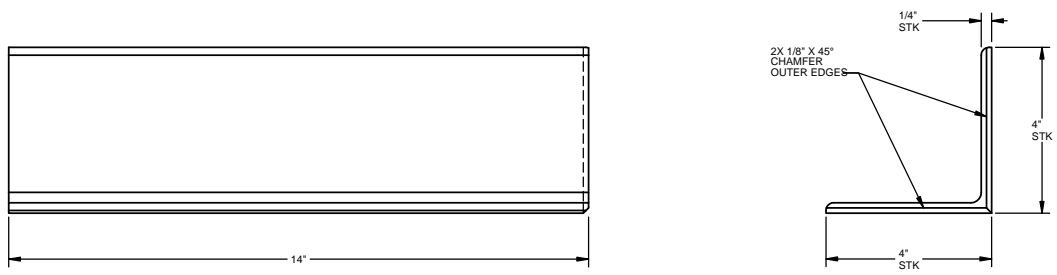
0116750



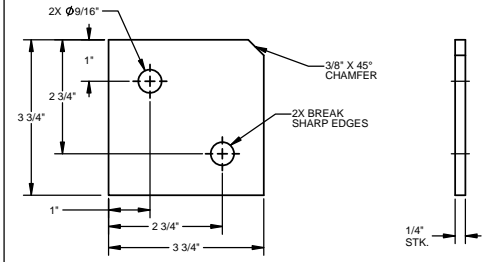
0116757



0116755



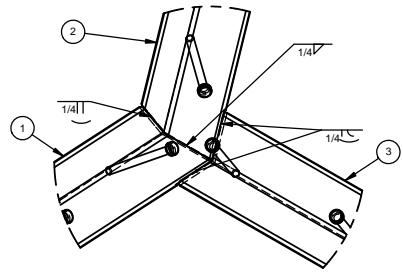
0116748



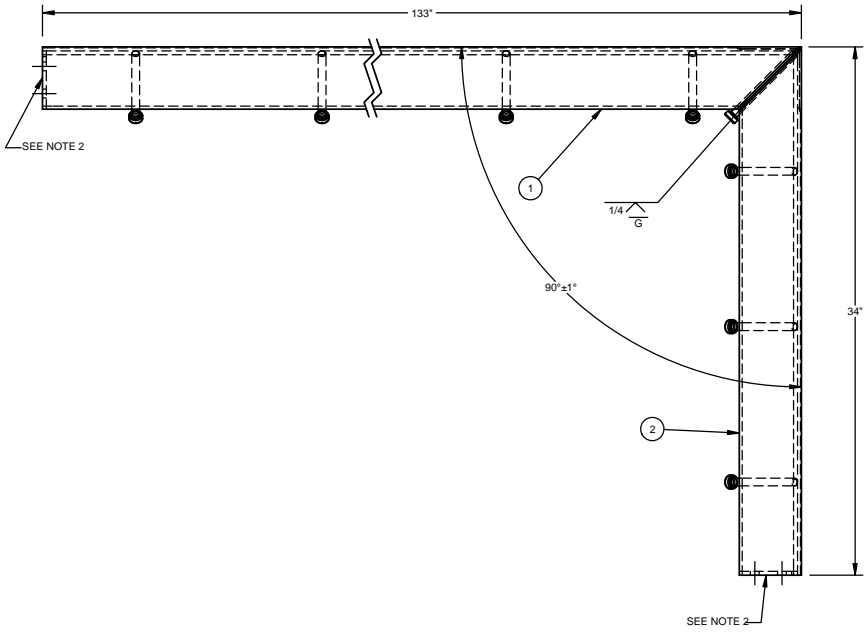
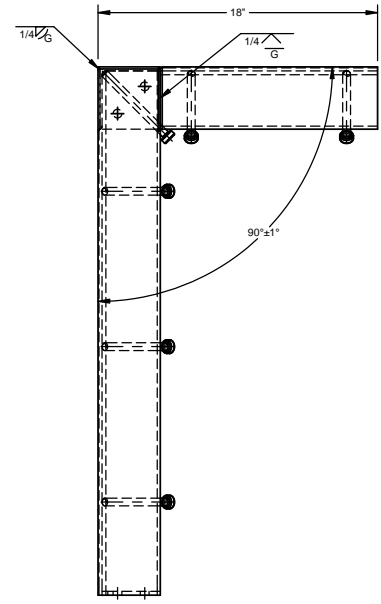
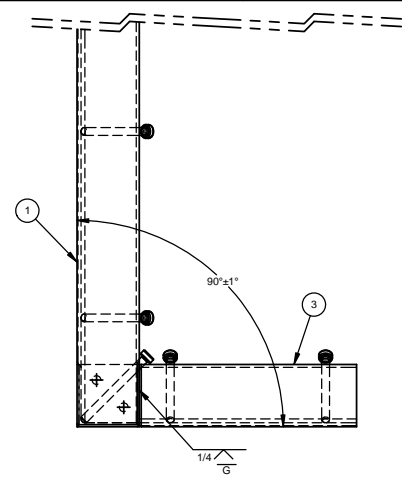
NOTES:
1) ALL TOLERANCES ±1/32"
2) MATERIAL: A-36 OR EQUIVALENT

FRESH	MATERIAL	DRAWN BY M. A. SWESSEL	
		RESPONSIBLE ENGINEER T. LATHAM	
TOLERANCES: X .XX = ±.00 .XXX = ±.000 XXXX = ±.003 XXXXX = ±.004		TITLE RITE-HITE® PRODUCTS CORPORATION	
THIRD ANGLE PROJECTION		REFERENCE	
© 2004 RITE-HITE PRODUCTS CORPORATION		ALL SHEETS ARE THE SAME REVISION STATUS	
DO NOT SCALE DRAWING		SCALE: 1:1.5	WGT
		SIZE D	DWG NO 0116788
		REV A	SHEET 3 OF 3

REVISION HISTORY				
REV	DATE	DESCRIPTION	ECN	APPROVED BY
A	08/27/2004	RELEASE FOR PRODUCTION	20040210	T. LATHAM



INSIDE CORNER DETAIL



SEE NOTE 2

SEE NOTE 2

- NOTES:**
- 1) ALL TOLERANCES $\pm 1/16"$
 - 2) REMOVE WELD SPATTER.
 - 3) PAINT ONE COAT RITE-HITE GRAY OR CUSTOMER SPECIFIED COLOR.
 - 4) REMAINING SHEETS OF THIS DRAWING ARE FOR FIELD USE ONLY.

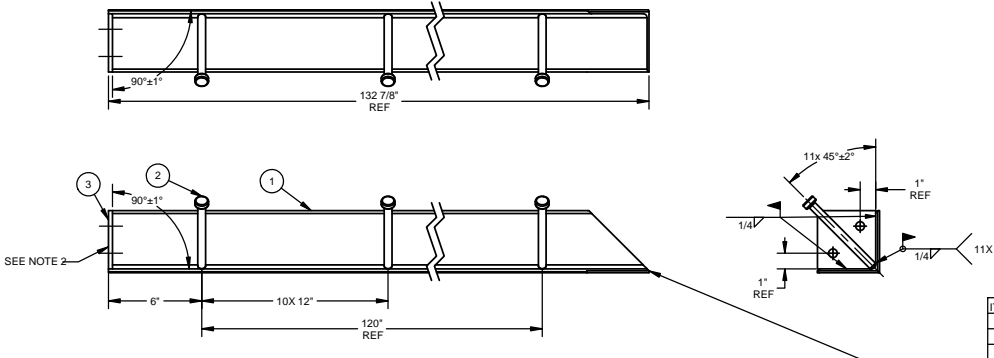
ITEM	QTY	PART NO	DESCRIPTION
1	1	0116761	ANG PITSTL 4 X 4 X .25 X 132.88L RIGHT
2	1	0116770	ANG PITSTL 4 X 4 X .25 X 33.88L RIGHT
3	1	0116769	ANG PITSTL 4 X 4 X .25 X 14L

FINISH	MATERIAL	DRAWN BY M. A. SWESSEL	
	UNLESS OTHERWISE SPECIFIED DIMENSIONS ARE IN INCHES.	RESPONSIBLE ENGINEER T. LATHAM	
TOLERANCES: .XX = .0020 .XXX = .0050 XXX = .0100 XXXX = .0150	THIRD ANGLE PROJECTION	MANUFACTURING ENGINEER	TITLE
	DO NOT SCALE DRAWING	REFERENCE	SCALE
© 2004 RITE-HITE PRODUCTS CORPORATION	ALL SHEETS ARE THE SAME REVISION STATUS	DO NOT SCALE DRAWING	SCALE 1:4
		SIZE D	DWG NO 0116789
		WEIGHT 107 LBS.	SHEET 1 OF 3
			REV A

RITE-HITE® PRODUCTS CORPORATION
PITSTL WLDMT RIGHT 34 X 133L

REVISION HISTORY			
REV	DATE	DESCRIPTION	APPROVED BY
A	08/27/2004	RELEASE FOR PRODUCTION	T. LATHAM

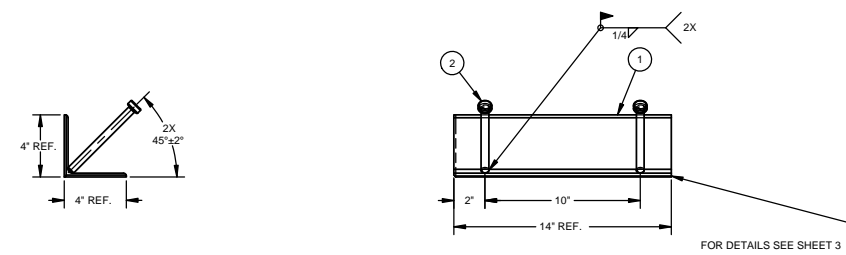
0116761 (ITEM #1)



FOR DETAILS SEE SHEET 3

ITEM QTY	PART NO	DESCRIPTION
1	1	0116749
2	11	0053122 STUD .5 X 6L NELSON
3	1	0116748 BAR .25 X 3.75 X 3.75L 2HOLE CHAM

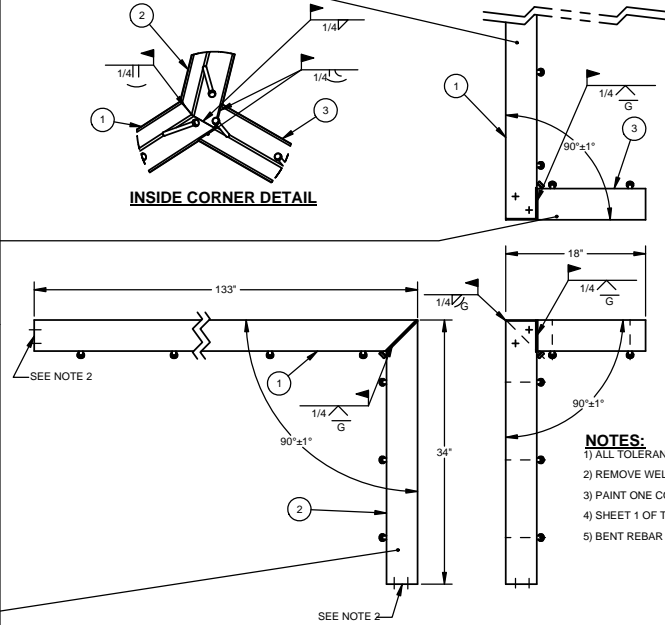
0116769 (ITEM #3)



FOR DETAILS SEE SHEET 3

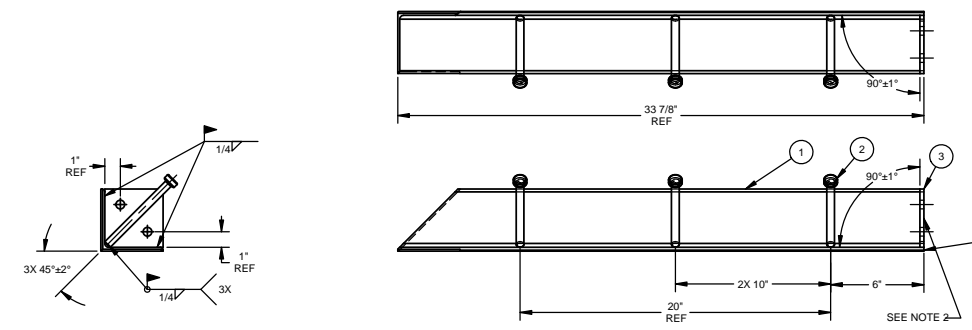
ITEM QTY	PART NO	DESCRIPTION
1	1	0116758 ANG 4 X 4 X .25 X 14L 2CHAM
2	2	0053122 STUD .5 X 6L NELSON

0116789



- NOTES:**
- 1) ALL TOLERANCES ±1/16"
 - 2) REMOVE WELD SPATTER.
 - 3) PAINT ONE COAT RITE-HITE GRAY OR CUSTOMER SPECIFIED COLOR.
 - 4) SHEET 1 OF THIS DRAWING IS FOR RITE-HITE PRODUCTION USE ONLY.
 - 5) BENT REBAR IS NOT AN ACCEPTABLE SUBSTITUTE FOR NELSON STUD.

0116770 (ITEM #2)



FOR DETAILS SEE SHEET 3

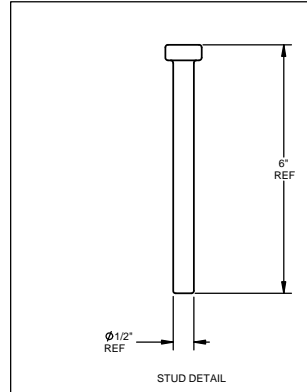
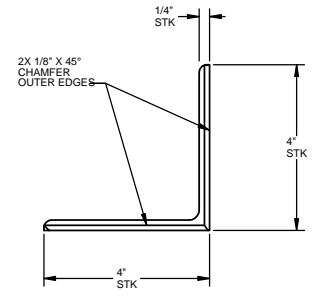
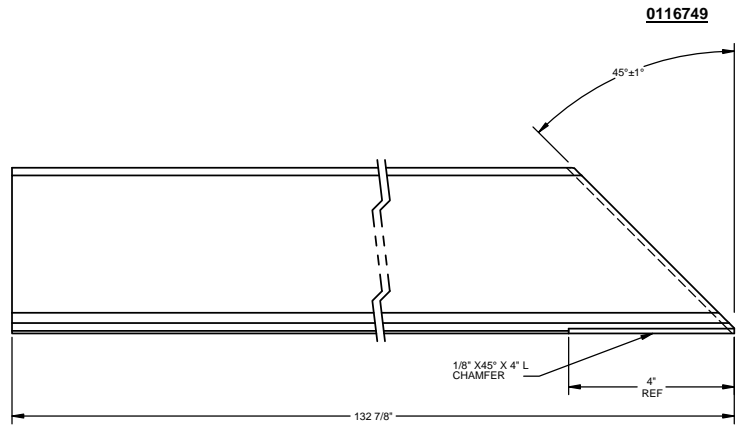
ITEM QTY	PART NO	DESCRIPTION
1	1	0116756
2	3	0053122 STUD .5 X 6L NELSON
3	1	0116748 BAR .25 X 3.75 X 3.75L 2HOLE CHAM

ITEM QTY	PART NO	DESCRIPTION
1	1	0116761 ANG PITSTL 4 X 4 X .25 X 132.88L RIGHT
2	1	0116770 ANG PITSTL 4 X 4 X .25 X 33.88L RIGHT
3	1	0116769 ANG PITSTL 4 X 4 X .25 X 14L

FINISH		MATERIAL	
DRAWN BY M. A. SWESSEL		RESPONSIBLE ENGINEER T. LATHAM	
TOLERANCES: X .XX = ±.00 X.XXX = ±.000 X.XXX = ±.003 X.XXX = ±.004		TITLE PITSTL WLDMT RIGHT 34 X 133L	
THIRD ANGLE PROJECTION		REFERENCE	SIZE D
© 2004 RITE-HITE PRODUCTS CORPORATION		ALL SHEETS ARE THE SAME REVISION STATUS	
DO NOT SCALE DRAWING		SCALE 1:8	DWG NO 0116789
		WEIGHT 107 LBS.	REV A
		SHEET 2 OF 3	

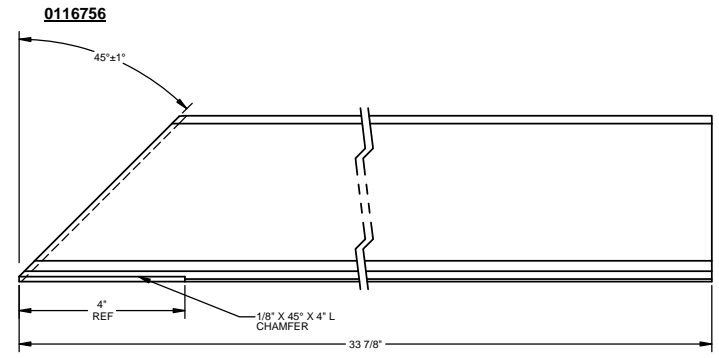
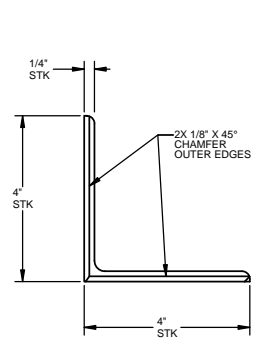
REVISION HISTORY				
REV	DATE	DESCRIPTION	ECN	APPROVED BY
A	08/27/2004	RELEASE FOR PRODUCTION	20040210	T. LATHAM

D



D

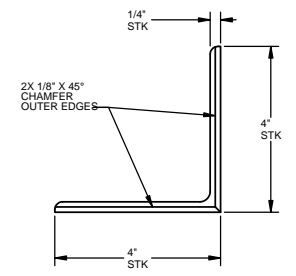
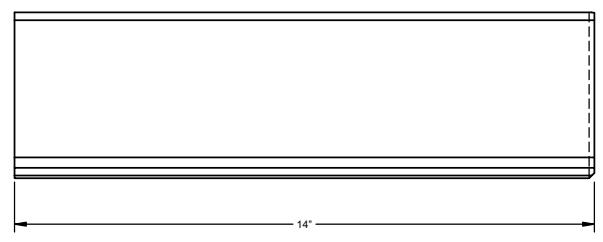
C



C

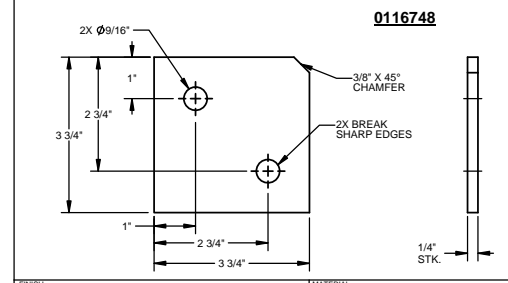
B

0116755



B

A



- NOTES:**
- 1) ALL TOLERANCES $\pm 1/32"$
 - 2) MATERIAL: A-36 OR EQUIVALENT

A

FINISH		MATERIAL	
DRAWN BY M. A. SWESSEL		RESPONSIBLE ENGINEER T. LATHAM	
TOLERANCES: .XX = $\pm .00$.XXX = $\pm .00$.XXX = $\pm .00$.XXX = $\pm .00$		TITLE RITE-HITE @ PRODUCTS CORPORATION	
THIRD ANGLE PROJECTION		REFERENCE	
SCALE: 1:1.5		DWG NO 0116789	
DO NOT SCALE DRAWING		SHEET 3 OF 3	

4

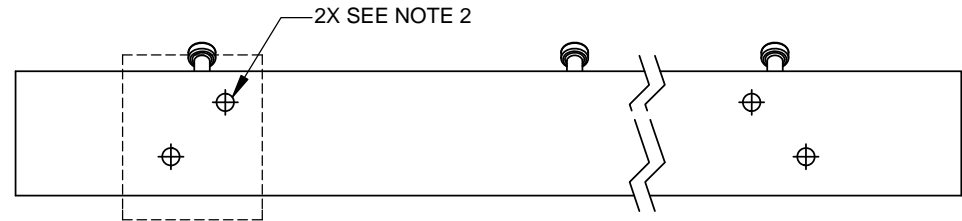
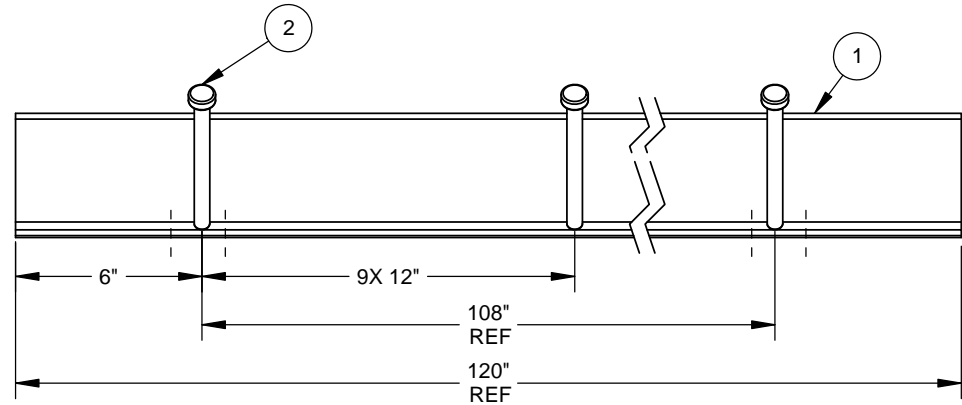
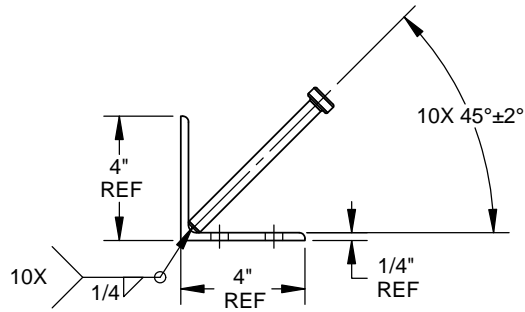
3

2

1

REVISION HISTORY

REV	DATE	DESCRIPTION	ECN	APPROVED BY
A	08/27/2004	RELEASE FOR PRODUCTION	20040210	T. LATHAM

**NOTES:**

- 1) ALL TOLERANCES $\pm 1/8"$
- 2) REMOVE WELD SPATTER IN ZONE SHOWN.
- 3) PAINT ONE COAT RITE-HITE GRAY OR CUSTOMER SPECIFIED COLOR
- 4) SHEET 2 OF THIS DRAWING FOR FIELD USE ONLY.

ITEM	QTY	PART NO	DESCRIPTION
1	1	0116758	ANG 4 X 4 X .25 X 120L 4HOLE
2	10	0053122	STUD .5 X 6L NELSON

FINISH		MATERIAL	
UNLESS OTHERWISE SPECIFIED DIMENSIONS ARE IN INCHES.		DRAWN BY M. A. SWESSEL	
		RESPONSIBLE ENGINEER T. LATHAM	
 TOLERANCES: .X = $\pm .120$.XX = $\pm .060$.XXX = $\pm .030$ ANGLE = ± 2.0 		MANUFACTURING ENGINEER	
		REFERENCE	
THIRD ANGLE PROJECTION		ALL SHEETS ARE THE SAME REVISION STATUS	
		DO NOT SCALE DRAWING	
© 2004 RITE-HITE® PRODUCTS CORPORATION		RITE-HITE® PRODUCTS CORPORATION TITLE: ANG PITSTL 4 X 4 X .25 X 120L PIT(104W)	
		SIZE B	DWG NO 0116776
		SCALE 1:4	WEIGHT 70.01 LBS.
		SHEET 1 OF 2	REV A

4

3

2

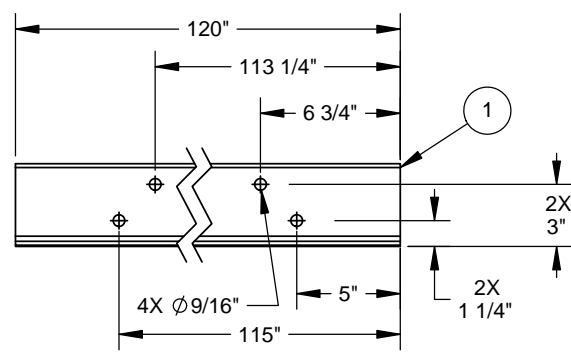
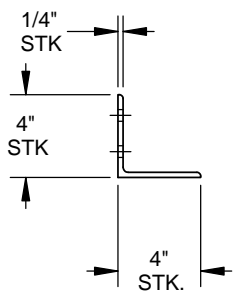
1

4

3

2

1



REVISION HISTORY				
REV	DATE	DESCRIPTION	ECN	APPROVED BY
A	08/27/2004	RELEASE FOR PRODUCTION	20040210	T. LATHAM

NOTES:

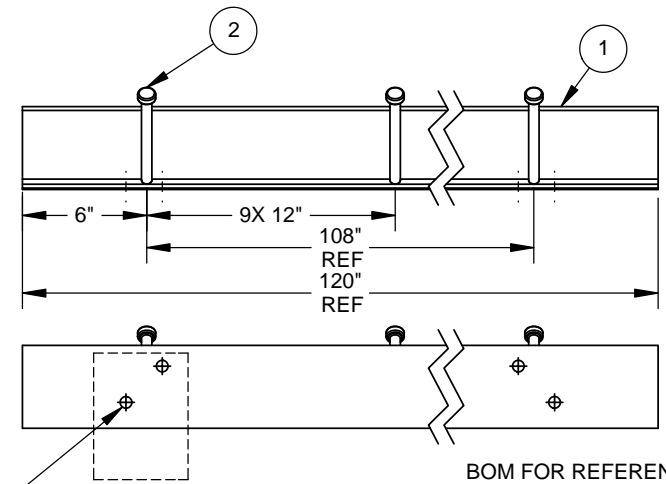
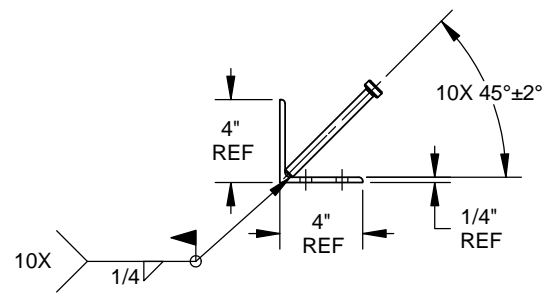
- 1) ALL TOLERANCES $\pm 1/8"$
- 2) BREAK ALL SHARP EDGES AT HOLES
- 3) MAT'L: A-36 OR EQUIVALENT

B

B

NOTES:

- 1) ALL TOLERANCES $\pm 1/8"$
- 2) REMOVE WELD SPATTER IN ZONE.
- 3) BEND REBAR IS NOT AN ACCEPTABLE SUBSTITUTE FOR NELSON STUD.
- 4) PAINT ONE COAT RITE-HITE GRAY OR CUSTOMER SPECIFIED COLOR.
- 5) SHEET 1 OF THIS DRAWING IS FOR RITE-HITE PRODUCTION USE ONLY.

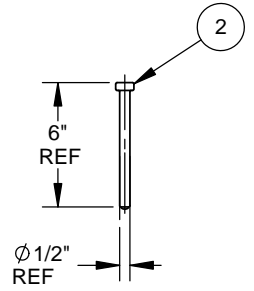


BOM FOR REFERENCE ONLY

ITEM	QTY.	DESCRIPTION
1	1	ANG 4 X 4 X .25 X 120L 4HOLE
2	10	STUD .5 X 6L NELSON

A

A



FINISH		MATERIAL		<p align="center">RITE-HITE® PRODUCTS CORPORATION</p>	
UNLESS OTHERWISE SPECIFIED DIMENSIONS ARE IN INCHES.		DRAWN BY M. A. SWESSEL			
<p>TOLERANCES:</p> <p>X = $\pm .120$</p> <p>.XX = $\pm .060$</p> <p>.XXX = $\pm .030$</p> <p>ANGLE = ± 2.0</p>		RESPONSIBLE ENGINEER T. LATHAM		TITLE ANG PITSTL 4 X 4 X .25 X 120L PIT(104W)	
THIRD ANGLE PROJECTION		MANUFACTURING ENGINEER		REFERENCE	
© 2004 RITE-HITE® PRODUCTS CORPORATION				ALL SHEETS ARE THE SAME REVISION STATUS	
		DO NOT SCALE DRAWING		SIZE B	DWG NO 0116776
				SCALE 1:6	REVISION A
				WEIGHT 70.01 LBS.	SHEET 2 OF 2

4

3

2

1

4

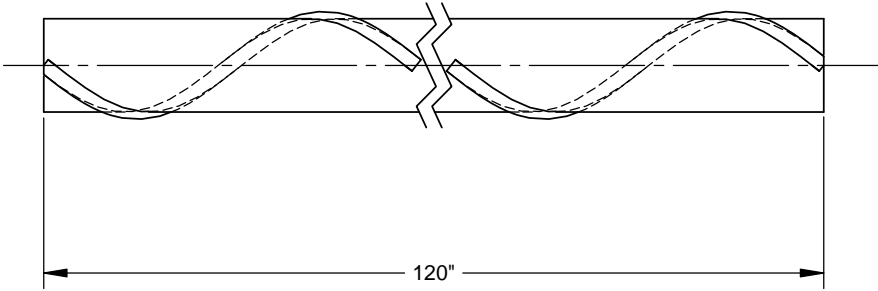
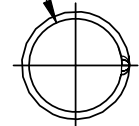
3

2

1

REVISION HISTORY				
REV	DATE	DESCRIPTION	ECN	APPROVED BY
A	08/27/2004	RELEASE FOR PRODUCTION	20040210	T. LATHAM

6 REBAR
 Ø3/4" REF



NOTES:

1) TOLERANCE ±1/4"

FINISH		MATERIAL HR STEEL REBAR #6 GRADE 60		
UNLESS OTHERWISE SPECIFIED DIMENSIONS ARE IN INCHES.	DRAWN BY M. A. SWESSEL		RITE-HITE® PRODUCTS CORPORATION	
	RESPONSIBLE ENGINEER T. LATHAM			
 TOLERANCES: .X = ±.120 .XX = ±.060 .XXX = ±.030 ANGLE = ±2.0° 	MANUFACTURING ENGINEER		TITLE REBAR #6 GR60 120L	
	THIRD ANGLE PROJECTION		REFERENCE	
		ALL SHEETS ARE THE SAME REVISION STATUS		SIZE B
© 2004 RITE-HITE® PRODUCTS CORPORATION		DO NOT SCALE DRAWING		DWG NO 0116747
		SCALE 1:1		WEIGHT 15.14 LBS.
				SHEET 1 OF 1
				REV A

4

3

2

1

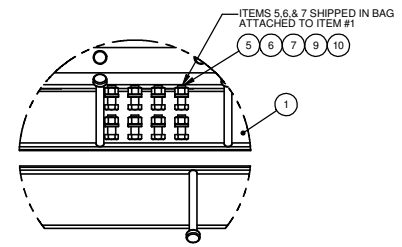
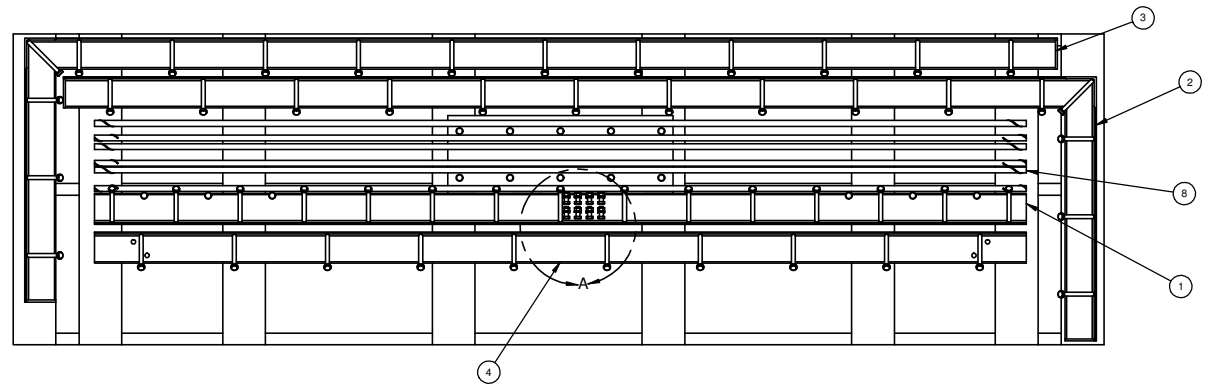
B

B

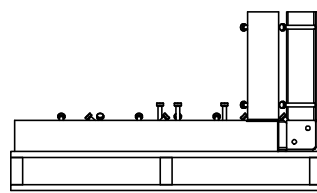
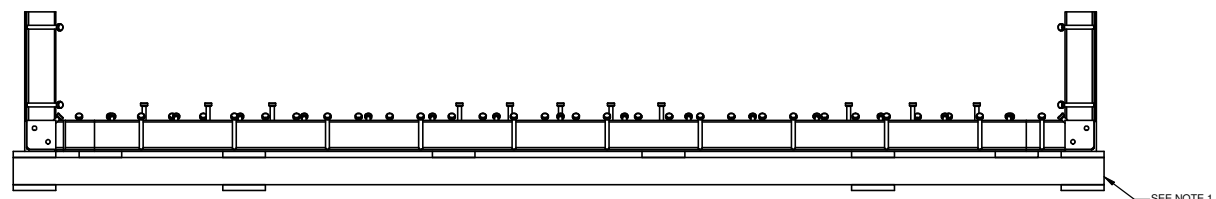
A

A

REVISION HISTORY				
REV	DATE	DESCRIPTION	ECN	APPROVED BY
A	08/30/2004	RELEASE FOR PRODUCTION	20040210	T. LATHAM
B	03/03/2008	PICTORAL UPDATE	20080042	J. ANDERSEN
C	03/10/2010	UP'D'D DESCRIPTION TO INCLUDE RHJ50	20090214	M. SVELUM



DETAIL A
SCALE 1 : 4



SEE NOTE 1

ITEM	QTY	PART NO.	DESCRIPTION
1	1	0116783	PITSTL WLDMT DFERT 14 X 120L
2	1	0116788	PITSTL WLDMT LEFT 34 X 133L
3	1	0116789	PITSTL WLDMT RIGHT 34 X 133L
4	1	0116778	ANG PITSTL 4 X 4 X 25 X 120L
5	8	0111273	BOLT .500-13X1.250 CAP HEX GS
6	8	0051807	WSHR SPLIT LOCK .50 DIA
7	8	0051553	NUT .500-13 HEX ZP
8	6	0116747	REBAR #6 GR60 120L
9	1	0118383	DWG ASSY PITSTL 104W 34P_RH
10	1	0116782	PIT DETAIL HJ/RHJ50 PITR34DX104W

- NOTES:**
- 1) PALLET SUPPLIED BY OTHERS.
 - 2) STEEL BAND MATERIALS TO PALLET IN 4 PLACES.
 - 3) HARDWARE AND DRAWINGS SHIPPED IN BAG ATTACHED TO ITEM # 1 REFERENCE PART#(0116783).

MATERIAL		DRAWN BY M. A. SWESSEL		RITE-HITE® PRODUCTS CORPORATION	
UNLESS OTHERWISE SPECIFIED DIMENSIONS ARE IN INCHES.		RESPONSIBLE ENGINEER T. LATHAM			
TOLERANCES:		MANUFACTURING ENGINEER		TITLE	
.XX = ±.00				PITSTL KIT 12L 8.5W PIT(34DX104W) HJ/RHJ50	
.XX.X = ±.005				REFERENCE	
.XX.XX = ±.001				SIZE	
HOLE = ±.01				DWG NO	
THIRD ANGLE PROJECTION		REFERENCE		0116779	
© 2010 RITE-HITE® PRODUCTS CORPORATION		ALL SHEETS ARE THE SAME REVISION STATUS		SCALE 1:8	
		DO NOT SCALE DRAWING		WEIGHT	
				SHEET 1 OF 1	
				REV C	